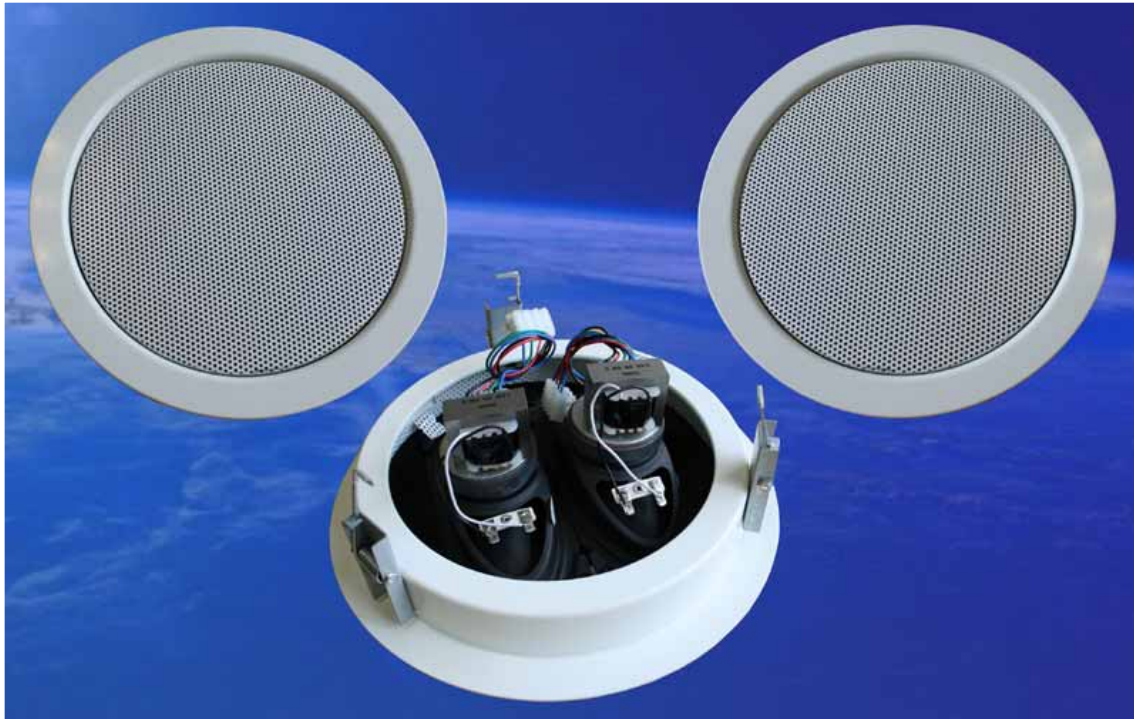


CLB-265-AB Ceiling-Speaker with 2 discrete System-Lines A / B



CLB
265
A/B
A / B

S
Y
S
T
E
M
L
I
N
E

S
P
E
A
K
E
R

- **TWO AUTONOMOUS** LOUDSPEAKER PER SYSTEM
- **TWO AUTONOMOUS** 100-VOLT-TRANSFORMER PER SYSTEM
- ENABLE OPERATION OF SPEAKER VIA TWO DISCRETE CABLE-LINES
- IN CASE OF FAILURE OF ONE LINE, CONTINUOUS FUNCTION OF THE SECOND-LINE
- **50-HZ-STABLE** 100-V-TRANSFORMER
- **TOUCH-PROTECTED** 100-V-QUICK-CONNECTING-CLAMP
- OPTIONAL CERAMIC-CONNECTING-CLAMP & THERMO-FUSE AVAILABLE
- **CUSTOM COLOUR & WEATHER-PROOF**-VERSIONS OPTIONAL
- OPTIONAL RG-220F / LAMPRODYN-200 / SZ-20-WA IN AB-VERSION

TECHNICAL DATA:	CLB-265-AB	CLB-265-AB/10
Loudspeaker:	2 x 15W 165 x 70-mm-Fullrange	2 x 15W 165 x 70-mm-Fullrange
Power-Consumption:	2 x 100V-6-3-1.5W	2 x 100V-10-5-2.5W
Frequency-Range:	70-20000 Hz	70-20000 Hz
SPL 1W/1m:	93 dB	93 dB
SPL xW/1m:	101 dB	103 dB
Dimensions:	268 mm x 80 mm	268 x 91mm
Ceiling-Cutout:	245 mm	245 mm
Weight:	1,4 Kg	1,6 Kg
Material:	ABS (UL-94) / Metal-Grill	ABS (UL-94) / Metal-Grill
Colour:	White similar RAL 9010	White similar RAL 9010
optional:	Firedome FT-265F	Firedome FT-265F

